

HANSEN™ THREADED FITTING

After the success of the Hansen Polythene Pipe Fittings, Hansen Products decided to design and manufacture a range of True Fit Threaded Pipe Fittings as there was a high demand for non-metallic threaded fittings. The Hansen range of True Fit Threaded Fittings is one of the largest ranges of durable, high strength, commercial quality Threaded Pipe Fittings in the Southern Hemisphere with over 250 products in the range.

Hansen True Fit Threaded Fittings are suitable for use above or below ground, in varying operating pressures and temperatures. They are Strong, Lightweight and Compact and are available in a variety of thread combinations and connections.

With over 60 years experience in manufacturing, Hansen Products knows the importance that pipe fittings play in the performance and control of fluid delivery, flow and pressure within a pipe system. This has seen Hansen Products build a reputation for providing high performance, easy to use, innovative, simple products that provide our customers with "Best Installed Value".



Conversion	
mm	inch
6	1/8"
8	1/4"
10	3/8"
15	1/2"
20	3/4"
25	1"
32	1 1/4"
40	1 1/2"
50	2"
65	2 1/2"
80	3"
100	4"

Features & Benefits:

- Largest range of durable, high strength, commercial quality threaded pipe fittings in the southern hemisphere
- Precision heavy duty tapered threads give a strong reliable seal
- Manufactured from a raw material approved for use with potable (drinkable) water
- Manufactured from High Quality Glass Fibre Reinforced Nylon giving a weather, termite, fungi & bacteria resistant
- Common applications include horticultural, agricultural, irrigation, marine & plumbing
- Material strong enough to minimise potential cross threading
- Suitable for use above or below ground in varying operating pressures and temperatures
- Strong, lightweight and compact
- Available in a variety of thread combinations and connections.
- New Zealand Made

Allowable pressure in bar at 20°		
Ø	Bar	PSI
1/8" ÷ 2"	16	235
2 1/2"	12	175
3" ÷ 4"	10	145

Standards & Approvals

WRAS: Hansen True Fit Threaded Fittings carry the WRAS approval by the Water Research Council in the UK which is the highest recognised water testing organisation in the world. A WRAS approved fitting must not cause waste, misuse, undue consumption or contamination of the water supply and must be of an appropriate quality and standard.

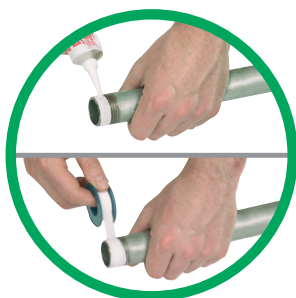
AS/NZS 4020: Hansen True Fit Threaded Fittings meet the requirements for products in contact with drinking water as per AS/NZS 4020 Australia & New Zealand drinking water standard.

Material: PA (reinforced nylon fiber).

FAST AND EASY TO INSTALL

No specialist skills are required.

Apply the sealant or Teflon, tighten the tube, tighten.



1. Apply the sealant or Teflon.



2. Tighten the tube.



3. Tighten.



LIST OF MAXIMUM RESISTANCE TO CHEMICALS						
Chemical substances	RESISTANCE LEVEL					
	THREADED FITTING			TANK FITTING		
	GOOD	OK - BUT CHECK FURTHER	BAD - TRY TO AVOID	GOOD	OK - BUT CHECK FURTHER	BAD - TRY TO AVOID
Acids weak			X			X
Acids strong			X			X
Organic acids weak		X			X	
Organic acids strong			X			X
Bases weak	X			X		
Bases strong		X			X	
Bleach			X			X
Automotive fuel	X					X
Automotive lubricants	X					X
Hydraulic fluids		X				X
Solvents		X			X	
Hydrocarbons	X			X		
Halogens			X			X
Alcohols		X			X	
Aldehydes			X			X
Amines			X			X
Esters	X					X
Ethers	X					X
Ketones		X				X
Detergents	X			X		
Oxidizing agents			X			X
Weak hydrogen peroxide		X			X	
Phenols			X			X

This chart is intended as a basic guide only. The resistance to a given chemical will vary with temperature and concentrations.

TANK FEMALE THREADED FITTING



Code	Ø	Pack.	Box
RAT010	½"	1	220
RAT011	¾"		160
RAT012	1"		110
RAT013	1¼"		70
RAT014	1½"		55
RAT015	2"		40
RAT016	3"		18
RAT017	4"		10

TANK HOSE ADAPTOR FITTING



Code	Ø	Color	Pack.	Box
RAT020	1¼"	black	1	150
RAT021	1½"			100
RAT022	2"			60
RAT023	1¼"	white		150
RAT024	1½"			50
RAT025	2"			60

FEMALE-FEMALE UNION



Code	Ø	Pack.	Box
SRBC001	½"	1	270
SRBC002	¾"		370
SRBC003	1"		240
SRBC004	1" x ¾"		240
SRBC005	1¼"		150
SRBC006	1¼" x 1"		155
SRBC007	1½"		100
SRBC008	2"		70



MALE-FEMALE REDUCER



Code	Ø	Pack.	Box	
SRRD001	3/4" x 1/2"	10	1.400	
SRRD002	1" x 1/2"		500	
SRRD003	1" x 3/4"		1.000	
SRRD004	1 1/4" x 1/2"		600	
SRRD005	1 1/4" x 3/4"		600	
SRRD006	1 1/4" x 1"		700	
SRRD007	1 1/2" x 1/2"		500	
SRRD008	1 1/2" x 3/4"			500
SRRD009	1 1/2" x 1"			500
SRRD010	1 1/2" x 1 1/4"			500
SRRD011	2" x 1/2"	270		
SRRD012	2" x 3/4"	280		
SRRD013	2" x 1"			280
SRRD014	2" x 1 1/4"			280
SRRD015	2" x 1 1/2"			280
SRRD016	2 1/2" x 1 1/4"			70
SRRD017	2 1/2" x 1 1/2"		160	
SRRD018	2 1/2" x 2"		150	
SRRD019	3" x 1 1/2"		40	
SRRD020	3" x 2"		100	
SRRD021	3" x 2 1/2"		50	
SRRD022	4" x 2"	1	30	
SRRD023	4" x 2 1/2"		30	
SRRD024	4" x 3"	63		

FEMALE REDUCER THREADED SOCKET



Code	Ø	Pack.	Box
SRMR001	3/4" x 1/2"	10	400
SRMR002	1" x 1/2"		270
SRMR003	1" x 3/4"		250
SRMR004	1 1/4" x 3/4"		160
SRMR005	1 1/4" x 1"		150
SRMR006	1 1/2" x 3/4"		120
SRMR007	1 1/2" x 1"		120
SRMR008	1 1/2" x 1 1/4"		110
SRMR009	2" x 3/4"		90
SRMR010	2" x 1"		70
SRMR011	2" x 1 1/4"	1	110
SRMR012	2" x 1 1/2"		110
SRMR013	2 1/2" x 1 1/2"		40
SRMR014	2 1/2" x 2"		60
SRMR015	3" x 2"		25
SRMR016	3" x 2 1/2"		36
SRMR017	4" x 2 1/2"		24
SRMR018	4" x 3"		

REDUCED NIPPLE



Code	Ø	Pack.	Box
SRNP100	3/4" x 1/2"	10	500
SRNP101	1" x 1/2"		170
SRNP102	1" x 3/4"		700
SRNP104	1 1/4" x 3/4"		80
SRNP105	1 1/4" x 1"		400
SRNP107	1 1/2" x 3/4"		120
SRNP108	1 1/2" x 1"		310
SRNP109	1 1/2" x 1 1/4"		290
SRNP111	2" x 3/4"		180
SRNP112	2" x 1"		160
SRNP113	2" x 1 1/4"	1	100
SRNP114	2" x 1 1/2"		100
SRNP115	2 1/2" x 1 1/4"		40
SRNP116	2 1/2" x 1 1/2"		40
SRNP117	2 1/2" x 2"		70
SRNP118	3" x 1 1/2"		96
SRNP119	3" x 2"		64
SRNP120	3" x 2 1/2"		36
SRNP121	4" x 2"		18
SRNP122	4" x 2 1/2"		
SRNP123	4" x 3"		

NIPPLE



Code	Ø	Pack.	Box
SRNP050	1/2"	10	800
SRNP051	3/4"		1.000
SRNP052	1"		600
SRNP053	1 1/4"		360
SRNP054	1 1/2"		260
SRNP055	2"		140
SRNP056	2 1/2"		85
SRNP057	3"		64
SRNP058	4"		27

90° MALE/FEMALE THREADED ELBOW



Code	Ø	Pack.	Box
SRGO100	1/2"	10	450
SRGO101	3/4"		600
SRGO102	1"		320
SRGO103	1 1/4"		200
SRGO104	1 1/2"		130
SRGO105	2"		70

FEMALE THREADED SOCKET



Code	Ø	Pack.	Box
SRMF050	1/2"	10	950
SRMF051	3/4"		700
SRMF052	1"		450
SRMF053	1 1/4"		280
SRMF054	1 1/2"		200
SRMF055	2"		120
SRMF056	2 1/2"		80
SRMF057	3"		45
SRMF058	4"		24

90° FEMALE THREADED ELBOW



Code	Ø	Pack.	Box
SRGO050	1/2"	10	400
SRGO051	3/4"		550
SRGO052	1"		320
SRGO053	1 1/4"		190
SRGO054	1 1/2"		130
SRGO055	2"		70
SRGO056	2 1/2"		40
SRGO057	3"		10
SRGO058	4"		11

MALE-FEMALE REDUCER



Code	Ø	Pack.	Box
SRMG001	1/2" M x 3/4" F	10	240

MALE THREADED PLUG



Code	Ø	Pack.	Box
SRTA001	1/2"	10	550
SRTA002	3/4"		700
SRTA003	1"		500
SRTA004	1 1/4"		280
SRTA005	1 1/2"		400
SRTA006	2"		260
SRTA007	2 1/2"		60
SRTA008	3"		90
SRTA009	4"	1	27

FEMALE THREADED CAP



Code	Ø	Pack.	Box
SRTA100	1/2"	10	900
SRTA101	3/4"		700
SRTA102	1"		450
SRTA103	1 1/4"		230
SRTA104	1 1/2"		320
SRTA105	2"		220
SRTA106	2 1/2"		60
SRTA107	3"		70
SRTA108	4"	1	24

DIE AND WINGS FITTING FROM F TO H.A.



Code	Ø	Pack.	Box
SRPG001	1/2" F x 1/2" PG	1	10
SRPG002	3/4" F x 1/2" PG		200
SRPG003	3/4" F x 3/4" PG		350
SRPG004	1" F x 1/2" PG		150
SRPG005	1" F x 3/4" PG		250

DIE



Code	Ø	Pack.	Box
SRDD001	1/2"	10	10
SRDD002	3/4"		
SRDD003	1"		
SRDD004	1 1/4"		

90° FEMALE THREADED TEE



Code	Ø	Pack.	Box
SRTE001	1/2"	10	250
SRTE002	3/4"		360
SRTE003	1"		200
SRTE004	1 1/4"		110
SRTE005	1 1/2"		80
SRTE006	2"		45
SRTE007	2 1/2"	1	15
SRTE008	3"		19
SRTE009	4"		9

9° MALE/FEMALE KMUCKLE UNION



Code	Ø	Pack.	Box
SRBC010	3/4"	5	5
SRBC011	1"		
SRBC012	1 1/4"		

LARGE DIE



Code	Ø	Pack.	Box
SRDD005	1/2"	10	10

